



SALINE COUNTY REGIONAL SOLID WASTE MANAGEMENT DISTRICT

Rogan

18511 W. Sardis Rd. • Bauxite, AR 72011 • (501) 602-2667 • Fax (501) 557-2918

AFIN: 63-00155
Pmt #: RSWMD-SAL
REC'D
SCAN SEP 27 2010
Doc ID# 58346
To: RL file

S
W
M
D

August 19, 2010

Karen Bassett, Chief Deputy Director
Arkansas Department of Environmental Quality
5301 Northshore Drive
North Little Rock, AR 72118

Dear Ms. Bassett:

Please accept this letter as a response to your letter dated June 30, 2010 regarding the Saline County Regional Solid Waste Management District's Solid Waste Plan update submitted in February 2010.

The Saline County Regional Solid Waste Management District Board has created the Saline County Solid Waste Task Force, which includes several members of the general public, waste hauler representation, local government employees and business people. This Task Force has been charged with the mission of reviewing and recommending new and innovative ideas and plans for implementation into the upcoming solid waste plan, emphasizing areas that are deficient. The Solid Waste Task Force is in the process of addressing several items pertaining to collection of municipal solid waste, recyclable materials and yard waste. They will be investigating how county residents currently handle their waste and a plan will be created to advance Saline County into the future

The Saline County Regional Solid Waste Management District Board is anticipating exciting changes in the plan for the up-coming year and look forward to presenting them to ADEQ in March of 2011.

Sincerely,

Steve Metcalf
Steve Metcalf
Chairman

Saline County Regional Solid Waste Management Plan 2009 Update Review – Responses

Chapter One – Activities Analysis

Section 2.102 Organization and Administration

A letter has been sent to Senator Shane Broadway to request an Attorney General ruling on the term limits for appointed board members.

Mr. Eddie Jones is the Saline County RSWMD Interm District Director

Section 2.105 Current Services

The Saline County Solid Waste Task Force is in the process of investigating the county collection participation and recommend an action plan to the Board for approval to increase participation in collection of solid waste, recyclable materials and yard waste.

The physical locations for the recycling trailers are

City of Benton Police Department on East Street in Benton
City of Bryant City Hall on 2nd Street in Bryant
City of Bryant Police and Fire Complex on Roya Lane in Bryant
Haskell Fire Department Hwy 229, Haskell, AR

These trailers are open to the public 24/7 except when they are being brought to the collection/processing center to be emptied. There are no names or phone numbers on satellite trailers.

The Saline County Solid Waste Task Force is in process of identifying the options available to the District in order to establish a permitted compost facility.

The Saline County Solid Waste Task Force is in process of identifying the options available to the District that would be best practice for waste reduction services.

The Saline County Solid Waste Task Force has identified that there is a need for an extensive education program for waste reduction, reuse, recycling in the District and will be presenting a plan to implement the program to the Board for approval.

The Inter-District Tire Management Program Agreement is attached.

The District does not currently have a program for household batteries but the Saline County Solid Waste Task Force is in the process of identifying the options available to the District and recommend a program to handle disposal/recycling of household batteries, household hazardous waste and fluorescent bulbs.

The District does not have plans at this time to establish waste oil burners.

The District will be applying for e-waste grants in order to continue and broaden the collection and transportation of e-waste.

The District has a very basic information pamphlet that it currently hands out but new pamphlets will be created for distribution with the funding of this year's recycling grant.

The District will be implementing a plan to address storm and disaster debris. The District currently makes the Class IV landfill available for disposal of storm debris.

Chapter Two – Action Plan

Section 2.203 Goals

The Saline County Solid Waste Task Force will be identifying progresses made over previous years and set plans to identify measurable progress in the up-coming years.

The Saline County Solid Waste Task Force will be recommending District wide high level goals for the District Board to approve for the next decade and there will be a minimum of three.

Evaluation of District based funding at this time is based on tipping fees from the landfill gate.

The District with the help of the Solid Waste Task Force plans to establish waste reduction plans and promote to through an extensive education program.

The District with the help of the Solid Waste Task Force plans to establish an extensive education program.

At this time the District does not have a program to address household batteries.

At this time, the District does not have a household hazardous waste program but with the help of the Solid Waste Task Force, plans are being made to implement a program.

The District with the help of the Solid Waste Task Force plans to establish plans to expand the electronic waste program through the extensive education program and other options that may be available to the District through free prison/jail labor.

At this time the District does not have a program to address fluorescent bulbs or yard waste but the Solid Waste Task Force is addressing these issues with a plan to be presented to the Board for approval and implementation.

The District with the help of the Solid Waste Task Force plans to establish an extensive education program and a public awareness program that will incorporate integrated solid waste management. The District will be preparing education pamphlets during this year with the use of recycling grant funds and assistance of local educators and participation with local schools to provide education and information regarding all aspects of solid waste management, reduction, reuse, recycling.

The District will be implementing a plan to address storm and disaster debris. The District currently makes the Class IV landfill available for disposal of storm debris.

Section 2.204 Goal Areas -- Objectives

The Saline County Solid Waste Task Force will be assisting the District Board in preparing the objectives in the goal areas for the upcoming Solid Waste Plan.

The District will be implementing a plan to address storm and disaster debris. The District currently makes the Class IV landfill available for disposal of storm debris.

Section 2.205 Administrative

An implementation timetable will be created by the District Board with the assistance of the Solid Waste Task Force.

Landfill tipping fees were less in 2009 largely due to the reduction construction projects and the economy.

Section 2.207 Appendices

Inter-District Tire Management Program Agreement is attached.

**INTER-DISTRICT
WASTE TIRE MANAGEMENT PROGRAM
AGREEMENT**

THIS AGREEMENT is made and entered into this 10/17 day of February, 1992, by and between the Central Arkansas Regional Solid Waste Management District (RSWMD), Pulaski County RSWMD, Southwest Central RSWMD, and the West Central Arkansas RSWMD (Districts), for the purposes of operating and financing an Inter-district Waste Tire Management Program (Program).

- I. **Introduction and Background.** Act 752 of 1991 created RSWMDs; established the powers and duties of RSWMD boards of directors; and, set the responsibilities of RSWMDs to plan, regulate, and manage solid waste systems, facilities and programs. Act 752 of 1992, Arkansas Code Ann. § 8-6-718, directs the RSWMDs to establish waste tire collection programs.

Act 749 of 1991 levies waste tire fees to be collected by the Arkansas Department of Finance and Administration and establishes a Waste Tire Grant Fund (Grant) to be administered by the Arkansas Department of Pollution Control and Ecology and directs that grants be received by RSWMDs to finance waste tire management programs. Waste tire fees have been collected by the State of Arkansas since July 1, 1991, and have accumulated for each District in amounts determined by formula established by PC&E in Regulation 14. These Grant funds will be paid to the Program and established as reserve funds on behalf of the Districts upon PC&E's approval of the Districts' application for Grant funds. In addition, waste tire fees collected by the State of Arkansas on an ongoing basis will be distributed to the Program on behalf of the Districts on a calendar-quarter basis. These Grant funds will be used to operate the Program on a routine, ongoing basis. Use of some portion of the reserve fund will be necessary during the start-up period for the Program until the Program operations correspond to regular PC&E quarterly reporting and billing cycles. However, the reserve fund will be replenished as funding levels from regular quarterly funding draws permit.

Act 749 of 1991 and PC&E Regulation Number 14 require and give authority to RSWMDs to plan, implement and finance waste tire management programs; and,

Regulation Number 14 provides that regional solid waste districts may cooperate with each other in planning and implementing waste tire management programs.

The Districts hereby establish an Inter-District Waste Tire Management Program (Program) to pool their Grant resources, to accumulate together larger volumes of waste tires and thereby reduce unit prices for collection and disposal of waste tires, to reduce the operating overhead of waste tire management programs and to execute agreements for operation of the Program.

2. **Members and Boundaries.** The members of the Program shall be the Central Arkansas RSWMD, the Pulaski County RSWMD, the Southwest Central Arkansas RSWMD, and the West Central Arkansas RSWMD. For purposes of this agreement, Saline County and its local government jurisdictions are represented by the Southwest Central Arkansas RSWMD. Saline County has separated from the Southwest Central Arkansas RSWMD and upon organizing the Saline County RSWMD, may separately reaffirm its participation in the Program by official and formal action. The boundaries of the Individual members participating in the Program are delineated on the map labelled "Exhibit 1, attached hereto and made a part hereof.
3. **Administrative Structure and Procedures.** The chairpersons of the RSWMDs participating in this Inter-district Waste Tire Management Program shall constitute the Waste Tire Program Oversight Group (Group). The Chairperson of the RSWMD administering the Program shall chair the Group. At its first official meeting, the Group will elect a Treasurer and any other officers it deems necessary from its membership. The Group may receive technical advice and support from Districts staff members and consultants and engineers and other technical and professional advisors that they may employ.
4. **Administrative Agency.** The Districts agree that the Pulaski County RSWMD shall have responsibility for administering the Program and for supervising operating agreements and contractors as described in the Plan. Program administration costs of Pulaski County RSWMD shall not exceed 10% of Program Grant funds as provided in Regulation 14 and shall be in accordance with the budget included in the Plan and attached to this AGREEMENT as Exhibit 2.

Pulaski County RSWMD will employ a Waste Tire Program Administrator (Administrator) who will report directly to the Pulaski County Judge in the Judge's capacity as Chairperson of the Pulaski County RSWMD, and Chairperson of the Group. The Administrator will be accessible to and responsive to the Districts' Boards of Directors regarding the operation of the Program within their areas. Problems and issues with operation of the Program will be communicated to the Administrator who will be responsible for resolution with support from Pulaski County RSWMD and the Group. Communication between the Program and contractors will be through the Administrator, giving contractors only one party to deal with on a routine, daily basis.

5. **Fiscal Management Procedures.** The expenditure of all Program funds shall be approved by the Group and checks drawn on the Program bank checking account(s) shall be signed by the Chairman and the Treasurer of the Group. Approval of all expenditures shall be by resolution and shall be duly recorded in the minutes of the meetings of the Group. All Program funds shall be deposited in interest-bearing accounts that are insured by the FDIC. Balances in checking accounts in excess of amounts insured by FDIC shall be secured by U. S. Government Treasury securities.
6. **Commitment of the Waste Tire Waste Stream.** By this agreement, the Districts agree to submit all waste tires generated within their jurisdiction and governed by Act 749 of 1992 and PC&E Regulation Number 14 to the Program.
7. **Waste Tire Volumes Collected and Processed by District.** The capacity of the Program to collect, process, and recycle waste tires is determined by amount of Grant funds received by the Program and the "per-tire" unit prices for operation of the Program. Grant funds received on an ongoing, calendar-quarter basis will be used before reserve funds are used to finance the operation and administration of the Program. The volume of waste tires collected, processed, and recycled by the Program from each member RSWMD shall be managed within percentage ranges of the Grant funds received by the Program on behalf of the Districts. This approach of using percentage ranges to manage the flow of waste tires is necessary because there is no experience, nor any accurate basis, for projecting the precise number of waste tires that will be presented for disposal.

These ranges are calculated based upon the average ratio of each District's population, waste tire fees collected, and waste tire grant funds allocated and the ratio of grants received by District to the total Grant received by the Program. If the total production levels and costs of the Program are less each Program year than the total Grant funds received on a calendar-quarter basis, the balance will be added to each District's reserve amount described below in Section 8. If the total production levels and costs of the Program are greater each year than the total Grant funds received on a calendar-quarter basis, the total deficit will be appropriated proportionately from each District's reserve amount described below in Section 8. The calculation of the ranges is presented in Exhibit 3 which is attached hereto and made a part hereof.

District	Low	High
Central	14.00%	15.07%
Pulaski County	40.75%	48.16%
Southwest Central	21.08%	27.35%
West Central	15.08%	17.90%
Total	92.00%	108.00%

8. **District Reserve Amounts.** Waste tire fees have been collected by the State of Arkansas since July 1, 1991, and waste tire grant funds have accumulated for each District. These amounts allocated to the Program on behalf of each District will be held in reserve for each District and these funds will be used to pay for volumes of waste tires collected and processed for each District in excess of the ranges described in Section 7 of this agreement. The Group may reallocate funds from the Reserve amounts from one District to another only with the approval of the Boards of Directors of the affected Districts. The reserve for each District and the totals are as follows based on the ADPC&E document attached hereto and made a part hereof as Exhibit 4. The reserve for each District and the totals will change to reflect the amounts actually approved and Grant funds actually received from ADPC&E.

District	Reserve Fund Amount
Central	\$102,351
Pulaski County	\$297,923
Southwest Central	\$199,964
West Central	\$130,905
Total	\$731,143

9. **Managing the Flow of Waste Tires.** The Group will receive monthly statements of the volume of tires being processed from their areas with monthly and year-to-date waste tire volume and processing cost information provided. The Group will review monthly statements and assess volumes of tires being collected, processed and recycled and monitor the flow to assure that volumes are within the percentage ranges presented in Section 7. When and if the flow of waste tires is substantially different than the established ranges, the Group will determine the reasons for the differences and confer with the RSWMD Board of Directors of the affected areas through that RSWMD's Chairperson. The Group will manage the flow of waste tires from each District as necessary to meet the requirements of PC&E Regulation 14.
10. **Inter-District Waste Tire Management Plan.** In accordance with PC&E Regulation Number 14, the Districts have cooperated in the preparation of an Inter-District Waste Tire Management Plan (Plan) and have submitted the Plan to the Arkansas Department of Pollution Control and Ecology. The Plan incorporates a Program budget, including specific identification of Program administrative costs of the Districts. A copy of the Plan, labelled "Exhibit 5," is attached hereto and made a part hereof.
11. **Waste Tire Grant Funds.** By this agreement, the Districts agree to cooperate in a joint application for grant tire funds from ADPC&E; and, to dedicate Grant funds allocated to them from ADPC&E by the formula described in ADPC&E Regulation Number 14 to the Program on behalf of the Districts for purposes of financing the operations of the Program.
12. **Selection of a Waste Tire Contractor.** The Districts have cooperated in the selection a waste tire contractor to operate the Program. The selection process included jointly drafting a "Request for Proposals and Bids", reviewing the "Request for Proposals and Bids" with area tire businesses and industries, and issuing the Request for Proposals and Bids through mailings to area tire businesses and industries, and through public notices. The Districts received responses from three qualified bidders, reviewed and evaluated the proposals and bids, interviewed the low bidder, and determined that the low bid was the best bid. Through this process, the Districts have selected Davis Rubber Company of Little Rock as the Program Contractor (Contractor). The proposal

and bid received from Davis Rubber Company, labelled Exhibit 6, is attached hereto and made a part hereof.


- 13. Waste Tire Contract Execution.** The contract with Davis Rubber Company for operation of the Program shall be contingent on the ADPC&E approving the Districts Plan and awarding the Districts waste tire grant funds. The Chairpersons of the Districts shall indicate the approval and acceptance by their individual Districts of the contract with Davis Rubber Company by affixing their signatures to the contract documents. Chairpersons shall be authorized to execute the contract agreement by a formal resolution adopted by the Districts' Boards of Directors. A copy of the executed contract with Davis Rubber Company, labelled Exhibit 7, is attached hereto and made a part hereof. Copies of the approved District's resolutions authorizing execution of the Contractor are together labelled Exhibit 8, are attached hereto and made a part hereof.
- 14. Payments to Contractor.** The Group shall consider for approval, monthly vouchers from Contractor. Contractor shall submit billing statements to the Administrator by the 15th of each month for the waste tires processed and recycled during the previous calendar month, with a report of the number of tires processed by county and by district. The Administrator will evaluate the Contractor's monthly billing statements and make recommendations to the Group regarding payment. All payments to Contractor shall be for amounts specifically approved by the Group and all payments shall be made by check signed by the Chairman and Treasurer of the Group.
- 15. Contingencies.** The Program is subject to all applicable state and federal laws and contingent on said laws and regulations and contingent upon receipt of Grant funds to finance program operations.

16. **Approvals.** The Chairpersons of the Districts shall indicate the approval and acceptance by their individual Districts of this Agreement by affixing their signatures below. Chairpersons shall be authorized to execute the Agreement by formal resolutions adopted by each of the District's Boards of Directors. Copies of the approved resolutions, labelled together as Exhibit 9, are attached hereto and made a part hereof.

AGREED this 10th day of February, 1992.

Authorized Signatures


Judge Tom Catlett, Chairman, Central Arkansas RSWMD


Judge F.G. (Buddy) Villines, Chairman, Pulaski County RSWMD

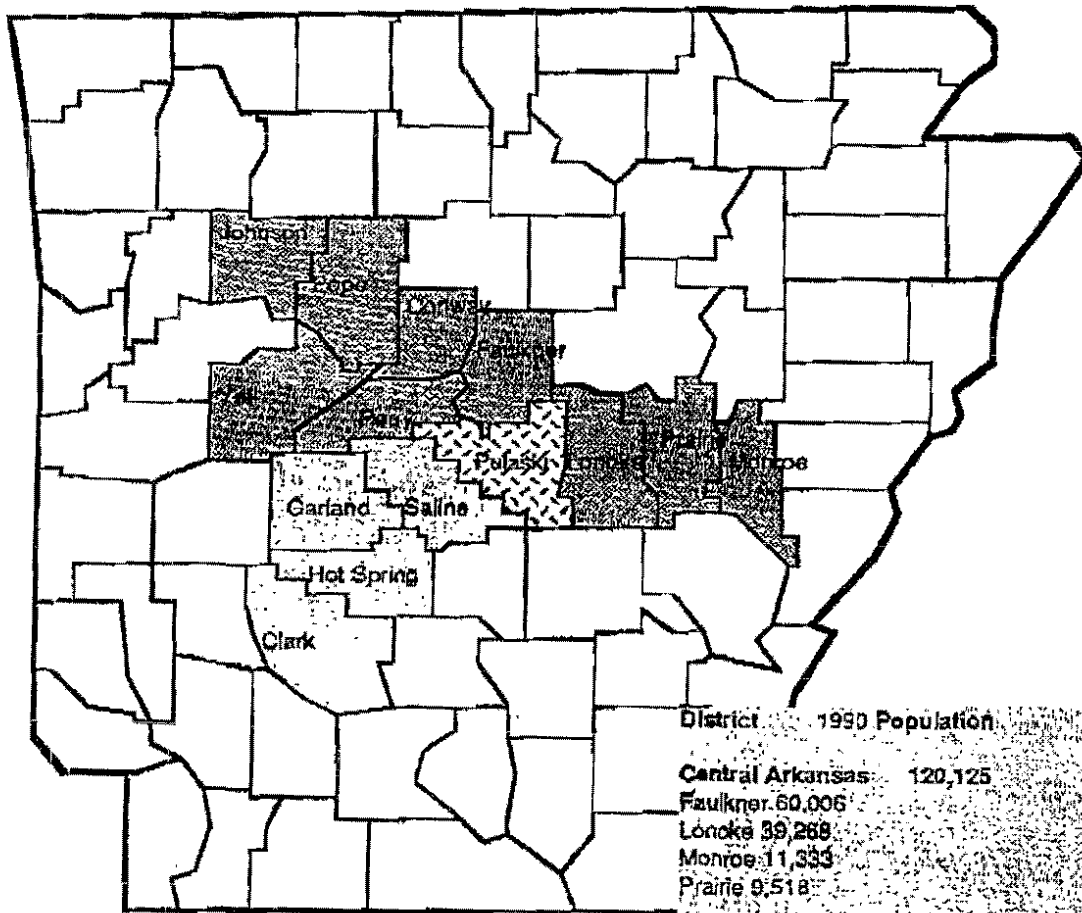

Mayor Melinda Baran, Chairperson, Southwest Central RSWMD


Mayor Woody Harris, Chairman, West Central RSWMD

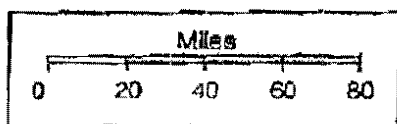
- Exhibit 1: Inter-District Area Map
- Exhibit 2: Administrative Budget
- Exhibit 3: Calculation of Ranges for Waste Tire Collection
- Exhibit 4: ADPC&E Document Itemizing Grant Allocation
- Exhibit 5: Inter-District Waste Tire Management Plan
- Exhibit 6: Proposal & Bid from Davis Rubber Company
- Exhibit 7: Inter-District Contract with Davis Rubber Company
- Exhibit 8: Resolutions Authorizing Execution of Contract with Davis Rubber Company.
- Exhibit 9: Resolutions Authorizing Execution of Inter-District Agreement.

EXHIBIT 1

Arkansas



Inter-District
Waste Tire Management Program
Member Districts and Service Area



District 1990 Population

Central Arkansas 120,125
 Faulkner 60,006
 Lonoke 39,268
 Monroe 11,333
 Prairie 9,518

Pulaski County 349,860

Southwest Central 165,132
 Clark 21,437
 Garland 73,397
 Hot Spring 26,115
 Saline 64,183

West Central 108,363
 Conway 19,151
 Johnson 18,221
 Perry 7,969
 Pope 45,883
 Yell 17,759

TOTAL 763,900

Inter-District Waste Tire Management Program Budget

Income

Fiscal Year 93	\$731,143	Grant funds accumulated to date.
Fiscal Year 94	\$550,000	FY94 funds to be received in quarterly payments.
Fiscal Year 95	\$550,000	FY95 funds to be received in quarterly payments.
Total Estimated Income	\$1,831,143	FY93, FY94 and FY95

Expenses

Contractor (1)	\$1,648,029	Not to Exceed 90% of Total Grant Funds
FY94 Administration (2)	\$55,000	Not to Exceed 10% of FY 94 Grant Funds
FY95 Administration (2)	\$55,000	Not to Exceed 10% of FY95 Grant Funds
Administrative Set Aside (3)	\$73,114	10% of FY93 Grant Funds

Total \$1,831,143

(1) Maximum amount available; payment based on actual experience at "per tire" cost of \$.70 and payment of scheduled amounts for truck tires and speciality tires.

(2) Total allowance for ongoing program administration. See administrative budget below.

(3) Use of 10% administrative allowance accumulated in 1991 and 1992 as an Administrative Set Aside. Start up capital costs (see below) would be paid from Administrative Set Aside.

Annual Administrative Budget

Program administrator	\$30,000	Including benefits and withholding taxes @ 20%
Part-time clerical person	\$9,000	Including benefits and withholding taxes @ 20%
Mileage Allowance	\$1,800	For Administrator's Use of Own Automobile
Audit Expenses	\$1,000	Estimated
Office Expenses	\$4,800	Estimated Rent, telephone, supplies, etc.
Manifest Forms	\$5,000	Estimated
Miscellaneous	\$3,400	
Total Operating Expenses	\$55,000	Not to Exceed 10% of Annual Grant Funds

Capital Budget & District's Expenses

Furnishings & Equipment		
District's Expenses	\$8,000	\$2,000 per District
2 Desks & 2 Chairs	\$1,000	
File cabinets	\$500	
Computer & Printer	\$2,500	
Software	\$1,000	
Total Capital Budget	\$13,000	Expended from Administrative Set Aside

Exhibit #4: Calculation of Ranges for Waste Tire Collection

Area	7991-8992 Collections	7992-12992 Collections	Total Collections (1)	% of Collections	Am't After Deduction of 23% (2)	Estimated Grant	% of Total Grant	Difference State Fees & Grant (3)	Population	Percent of Total Pop.	Avg of Ratios	Range Low	High
Central Arkansas RSWMU													
Faulkner	\$58,197.81	\$39,759.98	\$97,957.79										
Lonoke	\$20,220.72	\$11,525.04	\$31,745.76										
Madison	\$9,820.80	\$5,948.60	\$15,769.40										
Prairie	\$8,434.89	\$4,913.70	\$13,348.59										
Subtotal	\$100,674.03	\$62,157.32	\$162,831.35	15.47%	\$125,368.48	\$782,351	14.00%	\$23,037	120,125	13.73%	13.87%	14.00%	15.07%
Pulaski County RSWMU													
Pulaski	\$346,250.00	\$283,585.76	\$629,835.76										
Subtotal	\$346,250.00	\$283,585.76	\$629,835.76	31.95%	\$469,573.58	\$287,922	40.75%	\$171,651	349,660	43.77%	48.75%	40.75%	48.16%
Southwest Central Arkansas RSWMU													
Clark	\$11,554.97	\$9,933.85	\$21,488.82										
Garland	\$47,988.78	\$25,939.78	\$73,928.56										
Hot Spring	\$10,500.31	\$8,324.20	\$18,824.51										
Saline	\$18,868.70	\$11,084.86	\$29,953.56										
Subtotal	\$88,912.76	\$55,382.69	\$144,295.45	13.58%	\$109,367.44	\$159,864	27.35%	(\$50,597)	183,132	24.24%	21.89%	21.89%	27.35%
West Central Arkansas RSWMU													
Conway	\$13,467.89	\$11,823.18	\$25,291.07										
Johnson	\$13,938.75	\$7,336.70	\$21,275.45										
Perry	\$1,537.80	\$963.95	\$2,501.75										
Pope	\$46,673.20	\$28,014.99	\$74,688.19										
Yell	\$3,170.61	\$4,728.75	\$7,899.36										
Subtotal	\$84,888.25	\$52,865.57	\$137,753.82	13.08%	\$105,977.41	\$130,905	17.90%	(\$24,928)	189,983	14.27%	15.03%	15.03%	17.90%
Grand Total	\$629,025.10	\$432,321.30	\$1,061,346.40	100%	\$810,306.68	\$731,143	100.00%	\$79,164	763,900	100%	100%	82%	100%

(1) Collections Received by the State are remainder of the fees collected less 10% for dealer who collects them.

(2) Deductions from collections by the State are 23% (8% of Constitutional Officers; 10% for ADPO&E; and 10% for the Tire Abatement Fund which will be administered separately).

EXHIBIT 4

Regulation #14 - Waste Tire Program

The total funds used is the current balance in the Waste Tire Trust Fund, (\$2,871,000), less 10%, which has been set-aside for abatement of illegal waste tire disposal sites as required by Act 749. The 1990 Census figures have been used in calculating the portion of the grant distributions available to each district.

Regional Solid Waste Management Districts	1990 Census RSWMD Population	METHOD 'A'	METHOD 'B'	Actual Distribution
Central	170,325	\$72,661	\$132,041	\$102,357
Craighead	68,956	\$59,452	\$75,796	\$67,624
East	305,667	\$263,536	\$335,987	\$299,761
Four County (Northwest)	241,180	\$237,371	\$263,103	\$251,237
Northwest	86,991	\$85,617	\$95,620	\$90,618
Pulaski	249,660	\$211,503	\$384,344	\$297,874
Sebastian	99,590	\$156,841	\$109,469	\$136,155
Southeast	228,581	\$322,988	\$251,222	\$287,105
Southwest	166,534	\$224,654	\$185,053	\$203,353
Southwest Central	183,132	\$196,433	\$203,496	\$199,944
Upper-Southwest	108,168	\$149,014	\$118,897	\$136,956
West	88,152	\$138,896	\$96,896	\$117,862
West Central	108,983	\$142,017	\$119,793	\$130,905
White River	193,036	\$372,988	\$212,184	\$267,586
State Total	2,250,728	\$2,583,900	2,583,900	\$2,583,900

Method "A"

Pop. 847,953

\$ 731,143

1. Begin with the total remaining grant funds, (\$2,583,900).
2. Divide equally by the eight Regional Planning and Development Districts, (PDDs).
3. Multiply this result by the 1990 census population of each county.
4. Divide this result by the PDD population in which the county is located. (This determines the portion per county.)
5. Individual county portions are grouped and totaled by each new Regional Solid Waste Management District to give each RSWMD's allocation.

Method "B"

1. Begin with each Regional Solid Waste Management District's total population.
2. Divide by the State's 1990 census population, (to get ratio).
3. Multiply by the total remaining grant funds, (\$2,583,900).
4. Equals each Regional Solid Waste Management District's allocation.

Actual Distributions
Average of Method "A" and Method "B"

January 8, 1993

- Appropriated figure of \$ 2,871,000 less 10%

RESOLUTION NO. 4

A RESOLUTION AUTHORIZING THE CENTRAL ARKANSAS REGIONAL SOLID WASTE MANAGEMENT DISTRICT CHAIRPERSON TO EXECUTE AN AGREEMENT WITH PULASKI, SOUTHWEST CENTRAL AND WEST CENTRAL REGIONAL SOLID WASTE MANAGEMENT DISTRICTS TO PARTICIPATE IN AN INTER-DISTRICT GROUP FOR THE PURPOSES OF PLANNING, REGULATING, RECYCLING AND DISPOSING OF WASTE TIRES IN THE INTER-DISTRICT AREA.

WHEREAS, Arkansas Acts 749 and 752 of 1991 require Arkansas regional solid waste management districts to plan, regulate, and provide for the removal, processing, recycling, and disposal of waste tires; and

Whereas, representatives of the Central Arkansas Regional Solid Waste Management District Board have participated in discussions and planning with representatives of Pulaski, Southwest Central and West Central Regional Solid Waste Management Districts for the formation of an Inter-District group for the purposes of establishing an Inter-District Waste Tire Management Program; and

Whereas, the Central Arkansas Regional Solid Waste Management District Board of Directors believes that the District's best interests are served by participating in the Inter-District Waste Tire Management Program,

NOW THEREFORE BE IT RESOLVED by the Central Arkansas Regional Solid Waste Management District Board of Directors, that:

Section 1: The District Chairperson is hereby authorized to execute an Agreement with Pulaski, Southwest Central and West Central Regional Solid Waste Management Districts to participate in an Inter-District Waste Tire Management Program for the purposes of planning, regulating, recycling and disposing of waste tires in the Inter-District area.

ADOPTED: December 3, 1992

ATTEST: Charles Cummings

APPROVED

Tom Catlett
Tom Catlett, Chairman CARSWMB

RESOLUTION NO. 4

A RESOLUTION AUTHORIZING THE CENTRAL ARKANSAS REGIONAL SOLID WASTE MANAGEMENT DISTRICT CHAIRPERSON TO EXECUTE AN AGREEMENT WITH PULASKI, SOUTHWEST CENTRAL AND WEST CENTRAL REGIONAL SOLID WASTE MANAGEMENT DISTRICTS TO PARTICIPATE IN AN INTER-DISTRICT GROUP FOR THE PURPOSES OF PLANNING, REGULATING, RECYCLING AND DISPOSING OF WASTE TIRES IN THE INTER-DISTRICT AREA.

WHEREAS, Arkansas Acts 749 and 752 of 1991 require Arkansas regional solid waste management districts to plan, regulate, and provide for the removal, processing, recycling, and disposal of waste tires; and

Whereas, representatives of the Central Arkansas Regional Solid Waste Management District Board have participated in discussions and planning with representatives of Pulaski, Southwest Central and West Central Regional Solid Waste Management Districts for the formation of an Inter-District group for the purposes of establishing an Inter-District Waste Tire Management Program; and

Whereas, the Central Arkansas Regional Solid Waste Management District Board of Directors believes that the District's best interests are served by participating in the Inter-District Waste Tire Management Program,

NOW THEREFORE BE IT RESOLVED by the Central Arkansas Regional Solid Waste Management District Board of Directors, that:

Section 1: The District Chairperson is hereby authorized to execute an Agreement with Pulaski, Southwest Central and West Central Regional Solid Waste Management Districts to participate in an Inter-District Waste Tire Management Program for the purposes of planning, regulating, recycling and disposing of waste tires in the Inter-District area.

ADOPTED: December 3, 1992

ATTEST: Charlie Cummings

APPROVED

Tom Catlett
Tom Catlett, Chairman CARSWMB

FROM : PCRSWMD

FAX NO. : 5013408785

Feb. 13 2007 09:36AM P15

08-28-06 10:22AM FROM-ADEQ-SWMD

6018820811

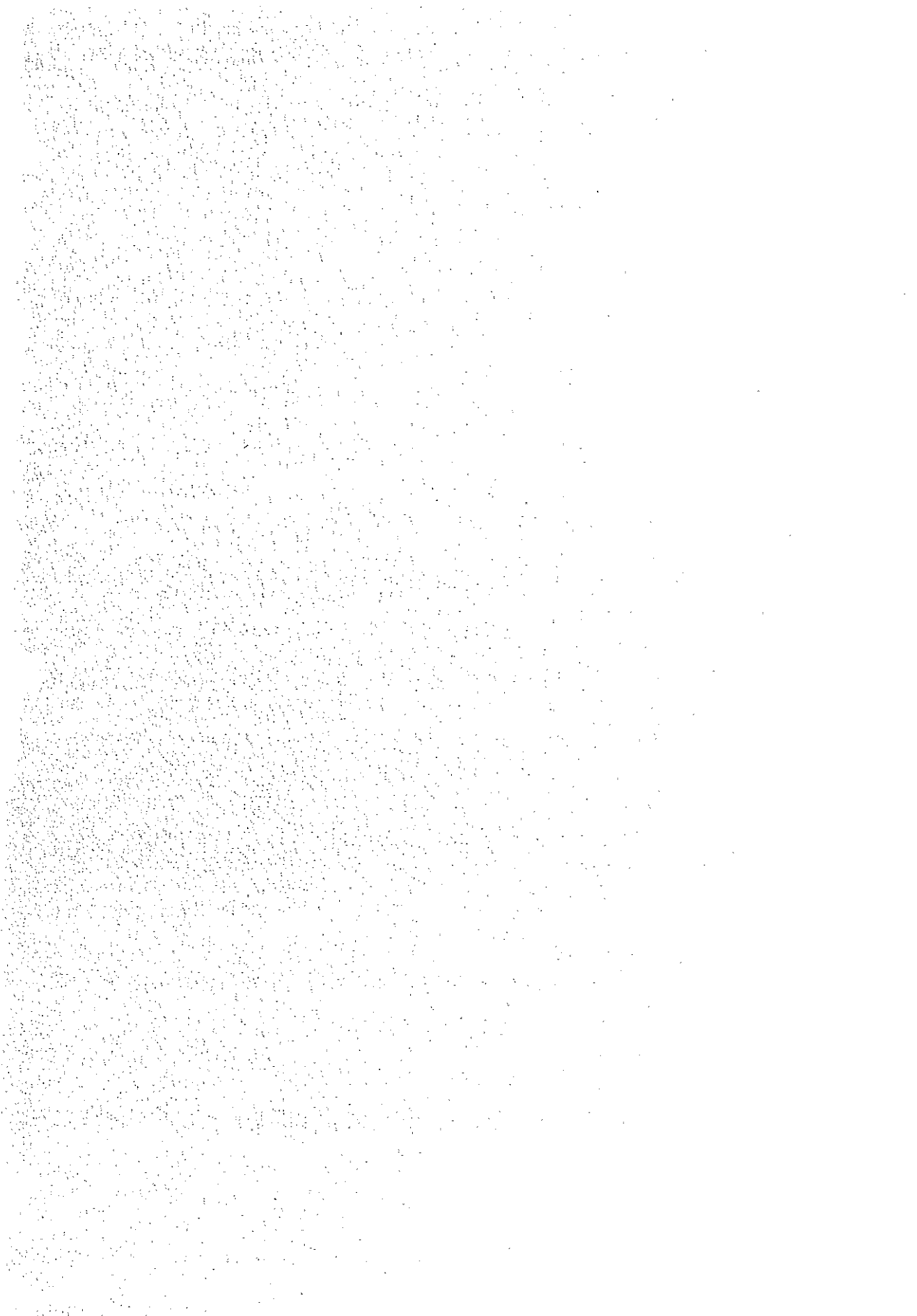
T-992 P.014/015 F-223

RESOLUTION 92-6

A RESOLUTION AUTHORIZING THE WEST CENTRAL REGIONAL SOLID WASTE MANAGEMENT DISTRICT CHAIRPERSON TO EXECUTE AN AGREEMENT WITH THE CENTRAL ARKANSAS, THE PULASKI COUNTY AND THE SOUTHWEST CENTRAL REGIONAL SOLID WASTE MANAGEMENT DISTRICT TO PARTICIPATE IN AN INTER-DISTRICT GROUP FOR THE PURPOSES OF PLANNING, REGULATING, RECYCLING AND DISPOSING OF WASTE TIRES IN THE INTER-DISTRICT AREA.

WHEREAS, Arkansas Acts 749 and 752 of 1991 require Arkansas regional solid waste management districts to plan, regulate, and provide for the removal, processing, recycling, and disposal of waste tires; and,

WHEREAS, representatives of the West Central Regional Solid Waste Management District Board have participated in discussions and planning with representatives of the Central Arkansas, the Pulaski County, and the Southwest Central Regional Solid Waste Management Districts for the formation of an Inter-District group for the purposes of establishing a Waste Tire Management Program; and,



Inter-District Waste Tire Program

Waste Tires Received Invoice

District is made up of the following counties:

Faulkner, Lonoke, Monroe, Prairie, Putaski, Clark, Garland, Hot Spring, Salina, Conway, Farry, Pope and Yell

Generator Information (Where did tires come from)
Name <i>Kelco</i>
Company <i>2275 I 30</i>
Street Address <i>Bayou Ave 72022</i>
City/St/Zip <i>501 547 9232</i>
Telephone <i>2012</i>
Registration No.

Hauler Information (Collector) (Who brought the tires to collection center)
Hauler's Name
Company
Street Address <i>Same</i>
City/St/Zip
Telephone
Collector Registration No. <i>001018</i>
Hauler Signature X <i>[Signature]</i>

Type of Waste Tires Received

- Four or fewer tires from the general public
- More than four tires from the public
- Passenger car/light truck tires (with State fee paid)
- Passenger car/light truck tires (without State fee paid)
- All passenger car/light truck tires mounted on wheel
- Large Truck Tires (greater than 19.5 inch rim size)
- All large truck tires mounted on wheel
- Super singles
- Farm and equipment sizes:

Quantity Received	Amount Charged	Amount Due
_____	No charge	_____
_____	\$1.00 each	_____
<i>31</i>	No charge	<i>0</i>
_____	\$1.00 each	_____
_____	\$3.50 each	_____
_____	\$4.50 each	_____
_____	\$25.00 each	_____
_____	\$9.00 each	_____
_____	\$ _____ each	_____
_____	\$ _____ each	_____
_____	\$ _____ each	_____
_____	\$ _____ each	_____
_____	\$ _____ each	_____
_____	\$ _____ each	_____

Other sizes (see rate schedule)

An additional charge for all tires mounted on wheels equal to the charge for that tire size

Total Amount Due: *0*

Date Received: *12/18/06*

Collection Center
Name <i>Hot Spring</i>
City <i>Hot Spring</i>
Collection Center Signature <i>[Signature]</i>

[The page contains extremely faint and illegible text, likely due to low contrast or scanning quality. The text is arranged in several paragraphs, but the individual words and sentences cannot be discerned.]

INTER-DISTRICT WASTE TIRE CONTRACT

THIS AGREEMENT is entered into this 8 day of January 2003 by and between Davis Rubber Company and Eaton Morey Environmental Service "EMS", hereinafter called "Contractors," and the Central Arkansas Regional Solid Waste Management District, the Pulaski County Regional Solid Waste Management District, the Southwest Central Regional Solid Waste Management District, and the Saline County Regional Solid Waste Management District, hereinafter called "Districts" for the operation of an Inter-District Waste Tire Management Program, hereinafter called "Program."

1. General Conditions. Contractors agree to operate the Program, complying fully with all applicable Arkansas statutes, and the Waste Tire Program Regulation Number 14, promulgated by the Arkansas Department of Environmental Quality hereinafter called "ADEQ".
2. Inter-District Waste Tire Management Program Agreement. Through an Inter-District Waste Tire Program Agreement, the Districts have agreed to cooperate in the planning, regulating, collection, processing and recycling of waste tires collected within their respective boundaries; and, the Districts have agreed to cooperate in the funding of the Program through the collective use of waste tire grant funds allocated to the Districts individually. In addition, the Districts have designated Pulaski County Regional Solid Waste Management District as the agency for administering this Agreement on an ongoing basis. A Program Oversight Group comprised of the Chairpersons of the four participating Districts shall oversee the Program.
3. Waste Tire Management Plan. The Contractors agree to operate the Program in accordance with the Districts' Inter-District Waste Tire Management Plan, hereinafter called "Plan," as approved by the ADEQ.
4. Contractor's Bid and Proposal. The Contractors and Districts agree to comply fully with the bid and proposal dated November 15, 2002, submitted by the Contractors to the Districts. A proposal is attached separately hereto and made a part hereof as Exhibit A.
5. Waste Tire Collection Centers. Contractors accepts responsibility and liability for the waste tires at the time the waste tires are deposited at the Waste Tire Collection Centers hereinafter called "Center(s)" during hours in which the Centers are open for business. Contractors accept responsibility to insure that the Centers will comply fully with ADEQ Regulation 14, Section 12, "Waste Tire Collection Center Requirements" and Section 16, "Storage Requirements".

Contractors will execute Center agreements and /or contracts for Centers operation, including a minimum of one and not more than two Centers in each of the eight counties

Inter-District Waste Tire Management Program
Contract with Davis Rubber Company and EMS

03 JAN 13 AM 10:58
CAROLYN STANLEY
CLERK
CIRCUIT-COUNTY
FILED

not including Pulaski County and three Centers in Pulaski County. The locations, names, and addresses of the Centers are indicated in the proposal and list attached hereto and made a part hereof as Exhibit A. Contractors shall maintain this level of waste tire collection service throughout the term of this agreement.

Contractors and Districts acknowledge that the location of Centers may change during the term of this agreement. Contractors shall provide Districts with a minimum of 30 days notice of the closure of a Center. Said notice is necessary to properly inform the public of a change in Center locations. Contractors agree to obtain Districts' approval of location and establishment of a new Center. Districts agree to approve or deny the location and establishment of a new Center within 10 working days of notification by the Contractors.

Neither Contractors, nor operators of Centers, are responsible for payment for tires dumped illegally at Center locations when the Centers are closed. Contractors agree to post signs at each Center location that clearly indicate the days and hours the Centers are open for business and warning that illegal dumping will be investigated and prosecuted to the fullest extent by the Contractors.

6. Waste Tire Volumes. Districts and Contractors shall monitor the flow of waste tires from the Centers to Contractors through trailer and roll off weight receipts for each waste tire shipment and keep records of waste tire volumes through the use of waste tire manifest forms to be provided to the Centers by the Contractors. Contractors accept responsibility for insuring that Centers properly fill out manifest forms in accordance with ADEQ Regulation 14, Section 12 and that all manifest are signed by Center personnel and waste tire collectors. The Contractors will be responsible to insure that the Centers submit an annual report to ADEQ on volumes in accordance with Regulation 14, Section 12.
7. Processing and Recycling. The Contractors agree to recycle a minimum of 75 percent of the waste tires collected through the Program and the Districts require that there will be no stockpiling, nor land filling of waste tires collected through the Program unless approve by the Districts. Contractors agree to furnish quarterly reports starting July 2003 on the number of Program waste tires recycle and to obtain Districts' approval on an individual case-by-case basis for temporary stockpiling of any waste tires products and/or any waste tire materials. Upon the execution date of this agreement, Contractors will identify any and all waste tires and waste tire materials that the Contractors have stockpiled and those waste tire and waste tire materials will not be subject to this Section 7 of this Agreement.
8. Charges. The prices to be paid to Contractors by Districts for waste tires received at the Centers and manifested, processed, recycled, and shipped to end users are as stated in Contractors proposal. (See Exhibit A)
9. Maximum Compensation. In no event shall the total quarterly compensation due to Contractors exceed the amount of grant funds obtained by Districts from the State Waste

Tire Grant Fund less an amount equal to 10% of the grant funds available to the Districts for administrative expenses unless approved quarterly by the Districts.

10. Payment. Districts will compensate Contractors monthly with funds from the State Waste Tire Grant Fund for all waste tires received at the Centers for that month, processed, recycled and shipped to end users including waste tires received at the Centers which were processed, and temporarily stockpiled for shipment to end users that were approved for temporary stockpiling as provided in Section 7. Payment shall be based upon invoices submitted by Contractors to the Districts by the twentieth of the month documented by the completed signed manifest forms from the Centers through the fifteen day of the month with the roll offs and trailers weigh receipts and shipment records. All payments herein shall come exclusively from said Grant Fund. There is no liability for such payment from other funds and resources of the Districts.
11. Performance Audit and Financial Audit. Districts shall have access to all Program-related Contractors records for purposes of monitoring Program performance and for conducting Program financial audits.
12. Term of Contract. The term of this Agreement shall commence on the March 15, 2003 and extend for a period of three years and then shall be renewable once for a two-year period. If at the end of the three-year term, either Contractors, or Districts, does not wish to continue this Agreement, they shall notify the other within one hundred and twenty (120) days prior to the expiration of the three year period.
13. Termination of Agreement. Districts may terminate this Agreement if Contractors does not fulfill any portion of the Contractor's responsibilities as described in this Agreement by giving thirty (30) days notice in writing to the Contractors. Notice shall be given by certified mail, return receipt requested.

Services under this Agreement are automatically postponed if grant funds are depleted prior to the end of the term of the contract until the Districts receive an additional disbursement from the State Waste Tire Grant Fund. Further, the Agreement terminates with no liability to the Districts, or of the counties and municipalities within the Districts, if the Districts do not receive any grant funds, or if the Districts cease to exist.
14. Contractor Indemnity. Contractors agrees that to the extent requirements apply for reclamation of tires and tire components, it shall complete the same in compliance with all Federal, State, and local requirements and shall keep in full force and effect all permits necessary or required to conduct such operations. Upon receipt of the waste tires into the possession of Contractors, Contractors agrees to indemnify Districts from any and all claims for the wrongful disposal or disposition of waste tires.
15. Authorization to Execute This Agreement. The Chairpersons of the Districts are authorized to execute this agreement on behalf of their respective regional solid waste

management districts by action of the governing bodies of the Districts. Copies of the authorizing resolutions are attached hereto and made a part hereof as Exhibit B.

- 16 Force Majeure. The performance of this contract shall be delayed for so long as acts of God or other events, such as floods, labor strikes, wars, and other such catastrophes or natural disasters, beyond the control of either party hereto prevent the performance thereof. However, such events shall only delay the performance of the contract, and shall not terminate the contract unless the circumstances are such that the continued performance is rendered unfeasible.

In Witness Whereof, the parties have hereunto set their hands this 8 day of January, 2003.

Central Arkansas RSWMD


By: Tom Catlett, Chairman

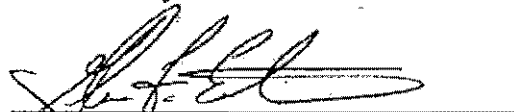
Davis Rubber Company


By: Roger Davis, Vice President

Pulaski County RSWMD


By: F.G. "Buddy" Villines, III, Chairman


Eaton Morey Environmental Services


By: Glen Eaton, President

Southwest Central RSWMD


By: Larry Williams, Chairman

Saline County RSWMD


By: Billy Bob Curtis, Chairman

EXHIBITS

- A. Davis Rubber Company and Eaton Morey Environmental Services Proposal
- B. Authorizing Resolutions



Eaton-Moery Environmental Services, Inc.

206 E. Merriman
Wynne, Arkansas 72396

Eaton Moery Environmental Services, Inc. in conjunction with the Davis Rubber Company is pleased to submit a bid for the Inter-District Waste Tire Management Program. This portion of the bid proposal will cover the scope, operations, management, and other details as implemented by Eaton Moery Environmental Services, Inc. for their portion of the bid proposal.

Davis Rubber Company will service all of the tire collection facilities within Pulaski County. Eaton Moery Environmental Services, Inc. will service all of the remaining counties under the IDWTP bid.

1. Scope of Services

Eaton Moery Environmental Services, Inc. will provide all waste tire management services necessary and required to fully implement the Inter-Districts policies and ADEQ regulation #14 in the Inter-District Service area outside of Pulaski County. These services include, but are not limited to, establishing collection centers, collecting and transporting waste tires from the collection centers to the processing location at Wynne, AR, processing waste tires, transporting recyclable tire materials to end users, and disposing of residual waste tire materials that cannot be recycled. EMS, Inc. will comply fully with ADEQ regulation #14 while providing waste tire management services to the Inter-District service area outside of Pulaski County.

2. Methods and Approaches

The Inter-District service area outside of Pulaski County will be serviced by EMS utilizing the following procedures, personnel, and materials.

- A. Tim Phillips (EMS's Operations Manager) will supervise the operation of the transportation, recycling, and storage of recycled product of the waste tires brought into our facility. Glen Eaton (President) will help supervise the administration of this operation. Tim and Glen both have a class 1,2, and 3C license.
- B. Tim Phillips will report to Glen Eaton (EMS President) for any further supervisory requirements.
- C. Our tire reprocessing facility is located at Wynne, AR. Our tire shredder is located inside of an enclosed facility to allow the reprocessing of tires in all weather conditions, not simply good weather. Current shredding equipment is a Saturn brand tire shredder. Our tire shredding equipment will be upgraded and refitted for the implementation of the IDWTP bid.
- D. Our waste tire collection centers are located at the following places:

Landfill Office: (870) 755-5331
Administration Office: (870) 238-3260

Interstate Tire, Russellville
Proctor Tire, Lonoke
Prairie County Farmers, Hazen/Sainer Oil, Des Arc
Hobson, Hot Springs
Conway Landfill, Conway
Natural State Tire, Conway
Saline County, Bauxite
Agricultural Co-op, Morrilton
Jim's Auto, Dardanelle
Ead's, Cabot
Bobby Hennard, Brinkley
Johnny Ellis, Clarendon/Tri County Farmers Co-op, Brinkley
William Wrecking, Malvern
Mid-Ark, Arkadelphia
Texaco, Perryville

EMS is willing to negotiate further locations on a case by case basis.

- E. EMS will be transporting the waste tires to our reprocessing location utilizing 40-yard roll off containers carried by our fleet of roll off trucks and pup trailers.
- F. Waste tires that are reprocessed by EMS will be done so at our facility at Wynne, AR. It is a medium sized tire shredding system that is installed inside a building to allow for the maximizing of it's potential by allowing the all weather reprocessing of tires. This is a system that we have operated in the past and will upgrade and refit for the reprocessing of waste passenger tires in the areas of the Inter-District outside of Pulaski County.
- G. The waste passenger tires will be converted into tire "chips". These chips will be utilized by EMS in the engineered construction of our landfill cells. These chips are deemed by ADEQ as an acceptable way to line a landfill for leachate flow. They are the best method that we have found for this leachate flow. We will utilize or remarket to other landfills, all of the tire chips that we generate. EMS itself currently operates 3 landfills, and has an enormous requirement for tire chips.
- H. All of the waste tire materials that cannot be recycled will be disposed of in our landfill located on site.
- I. It will take us approximately 30 days to start operations after award of the contract. Our current management will handle the operations of the reprocessing and transportation of waste tires, and the disposal of non-recyclables. Our current truck fleet will be able to absorb the additional transport requirements. The only aspect of the ramp up for implementation, is the upgrading and refitting of our tire shredding equipment. This will require approximately 30 days.

3. Recycling Waste Tire Materials




Exhibit A

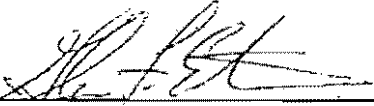


The following information is the bid from the davis rubber company and Eaton Morey Environmental Services to handel the waste tires from the Inter District Waste Tire Program. By presenting a bid that includes services from both companies we can provide the Interdistrict with a superior plan that includes recycling of your tires while providing fast service to collection centers.

We have provided you with this bid that follows the format layed out in your request for bid proposals. If after reading our proposal you have any questions please feel free to contact us and we will be glad to provide you with more information.

Thank You


Phillip Davis
Davis Rubber Company


Glen Eaton
EMS

EMS realizes that the Inter-District requires the recycling of waste tires. As previously mentioned, we will be recycling tires into tire chips for the engineered construction of landfill cells. EMS will recycle approximately 80% of the waste passenger tires that come from the Inter-District area outside of Pulaski County. That leaves approximately 20% of the passenger tires that will not be recycled due to contamination, etc. EMS will not recycle any of the large truck tires or large specialty tires. This is due to the fact that our shredding equipment will not shred the larger tires.

*Documentation
of Recycling
guaranteed*

4. Service Area

EMS will service all of the Inter-District that is not in Pulaski County. This includes, but is not necessarily limited to, Saline, Faulkner, Lonoke, Prairie, Monroe, Garland, Clark, and Hot Springs Counties.

5. Permit and License Requirements

Eaton Moery Environmental Services, Inc. meets all ADEQ requirements for licensed, permits, and other qualifying requirements for waste tire facilities and operations as outlined in Regulation #14. Our Waste Tire Processing Facility permit # is 004-WTP, and our Class 3T Waste tire monofill permit # is 269-S3T-R1.

6. Financial Assurances

Financial assurances as required by Regulation 14 for waste tire processing facilities are on file with ADEQ.

Copy on file

7. Experience and Qualifications

EMS has operated its tire shredding equipment from 1993 through 2000 for the East Arkansas Solid Waste District. We are well versed in what is required to convert waste tires into usable tire chips. Our existing facilities allow for the processing of approximately 275,000 waste passenger tires per year. Our tire reprocessing equipment is currently not being utilized so a minimum of 95% of the capacity of this shredding equipment will be utilized in the fulfillment of the IDWTP contract. All tire chips produced, will be utilized or remarketed by EMS. EMS operates 3 separate landfill facilities and is continuously building new cells. This construction requires a large and steady stream of tire chips for the engineered construction of these cells. A small percentage of the chips may be remarketed to other landfills for the same purpose of leachate control. We have been performing the transportation of waste tires, as described in this proposal, for the last few years. The continuation of this service will not even cause a "hiccup" in current service.

8. Business Partnerships

Eaton Moery Environmental Services, Inc. and Davis Rubber Company have entered into an agreement to file a joint bid for the IDWTP bid. Davis Rubber Company will service Pulaski County, and EMS, Inc will service all or the remaining area of the Inter-District. Davis Rubber Company is separately preparing their portion of this bid proposal.

9. Marketing

EMS, Inc. will be the end user for a minimum of 90% of the waste tire chips that we produced. As mentioned earlier in this proposal, we will use them in the construction of our own landfill cells. A small percentage may be remarketed to other landfill facilities.

10. Cost of Information

Enclosed Exhibit 3 shows our pricing. It is as follows:

Automobile Passenger Tires (tires with a rim size of less than 19.5 inches)- \$1.00 per tire.

Large Truck Tires (tires with a rim size of 19.5 inches or larger))- \$4.50 per tire.

Specialty tires:

Small forklift or small bobcat tires- \$5.00

Super Single Truck Tires- \$9.00

Farm Tractor Tires

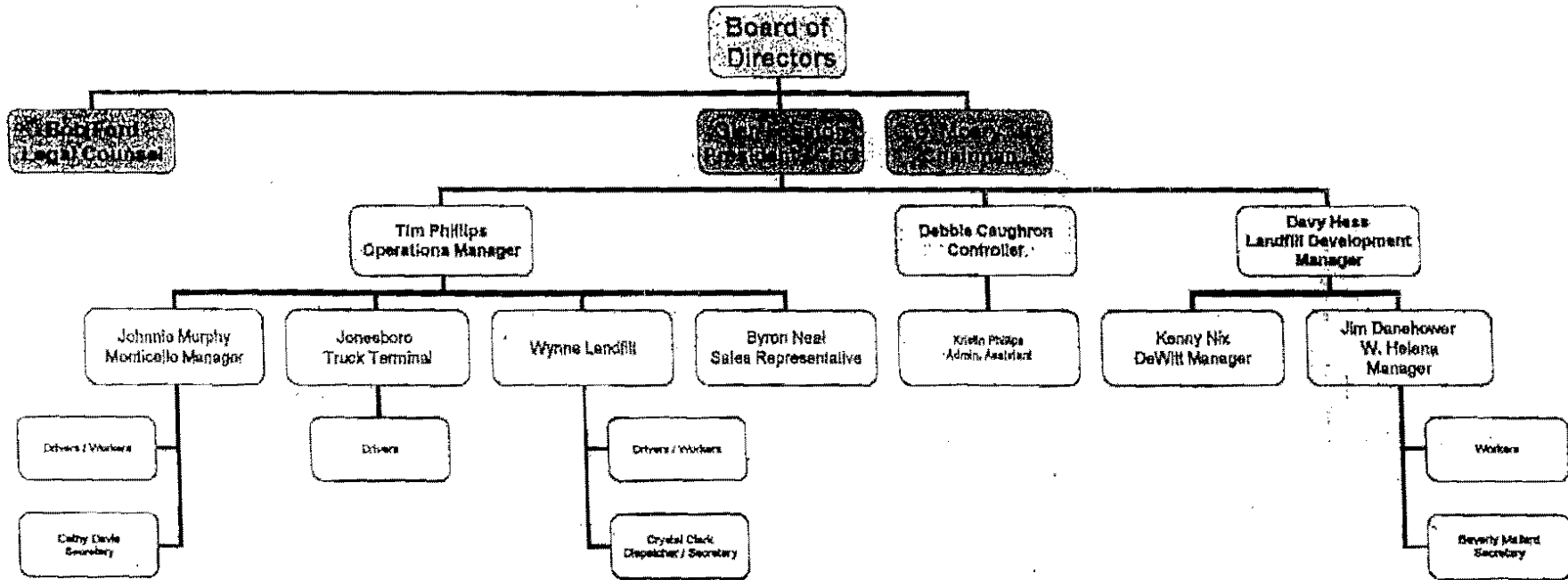
11.2 X 24 through 11.2 X 38
10 X 24 through 10 X 38
12.4 X 24 through 12.4 X 38
11 X 24 through 11 X 38- \$10.50

13.6 x 24 through 13.6 X 38
12 X 24 through 12 X 38
14.9 X 24 through 14.9 X 38
13 X 24 through 13 X 38- \$25.00

17.5 X 24
16.9 X 24 through 16.9 X 38
14 X 24 through 14 X 38
18.4 X 24 through 18.4 X 38
15 X 24 through 15 X 38
15.5 X 24 through 15.5 X 38- \$35.00

19.5 X 24 through 19.5 X 38- \$50.00

EMS, INC. Organizational Chart



11/12/2002

**Request for Proposals
Waste Tire Management Services
Inter-District Waste Tire Management Program**

Central Arkansas Regional Solid Waste Management District
Pulaski County Regional Solid Waste Management District
Saline County Regional Solid Waste Management District
Southwest Central Regional Solid Waste Management District

INTER-DISTRICT WASTE TIRE MANAGEMENT PROGRAM

BID SHEET

Regulation 14, Section 12 requires Waste Tire Collection Centers not to charge a fee to Individual residents for discarding four or fewer automobile tires, nor to charge a fee to retail sellers of tires with a waste tire number for discarding tires equal to the number of tires for which the retailer has collected the waste fees levied by Arkansas Code 8-9-404.

Regulation 14, Section 12, requires Waste Tire Collection Centers to collect a fee of \$1.00 per tire for all other automobile tires discarded. In addition, Section 12 provides that the Waste Tire Collection Center shall collect an equitable fee on all truck and specialty tires. All such fees collected by the Waste Tire Collection Centers shall be remitted to the District.

Bids shall be quoted as a Per Tire Unit Price and shall include the total cost per tire for waste tire collection, loading, transportation, processing, and shipment to the end market. The Per Tire Unit prices shall cover all business and operational costs associated with the company providing Waste Tire Management Services to the nine county Inter-District Service Area. The District will not be responsible for paying any business or operational expenses associated with doing business related to this contract.

Per Tire Unit Prices shall be quoted for the following types of waste tires.

Type of Waste Tires	Per Tire Unit Price
Automobile Tires (tires with rim size less than 19.5 inches)	\$ 1.00
Truck Tires (tires with rim size larger than 19.5 inches)	\$ 4.50
Specialty Tires (super singles, farm tractor tires, road grader tires, etc.) list separately by weigh or size	\$ See Attached

Tire Pricing

Automobile Passenger Tires (tires with a rim size of less than 19.5 inches)- \$1.00 per tire.
Large Truck Tires (tires with a rim size of 19.5 inches or larger))- \$4.50 per tire.

Specialty tires:

Small forklift or small bobcat tires- \$5.00

Super Single Truck Tires- \$9.00

Farm Tractor Tires

11.2 X 24 through 11.2 X 38
10 X 24 through 10 X 38
12.4 X 24 through 12.4 X 38
11 X 24 through 11 X 38- \$10.50

13.6 x 24 through 13.6 X 38
12 X 24 through 12 X 38
14.9 X 24 through 14.9 X 38
13 X 24 through 13 X 38- \$25.00

17.5 X 24
16.9 X 24 through 16.9 X 38
14 X 24 through 14 X 38
18.4 X 24 through 18.4 X 38
15 X 24 through 15 X 38
15.5 X 24 through 15.5 X 38- \$35.00

19.5 X 24 through 19.5 X 38- \$50.00

20.8 X 24 through 20.8 X 38- \$57.00

Road Grader Tires

1200 X 24
1300 X 24
1400 X 24- \$25.00

Skidder Tires

All 23.1- \$80.00

28.2 X 26- \$100.00

All farm tires on the wheel will be charged triple the cost of the tire size.

Larger earthmover tires up to 1000 lbs. \$150 to \$200 each. Over 1000 lbs. will need individual quote.



1. The Davis Rubber Company will provide all waste tire management services necessary and required to fully implement the Inter-District's policies and ADEQ Regulations Number 14 in the area of Pulaski County. EMS will be responsible for the service of the rest of the Inter-District.

2. **Methods and Approaches.** The Davis Rubber Company will provide the Inter-district with the best method and approaches possible because we will be bringing into the state of Arkansas the best technology available to shred tires. With the equipment that we will direct the Inter-District to purchase with its \$300,000 we will be able to process tires into products that can then be sold to markets with a recycling rate of near 95%. The quality requirements that are in effect for chips used in land fill and septic tank construction are very specific about the length of the wire sticking out from the sides of each chip. Most shredders do a poor job of making a clean cut chip and actually don't produce chips that meet these requirements. The machine that we will be using is one of only two models that can process hundreds of thousands of tires before the blades need to be changed while all the time making tire chips that meet these specifications.

Another very important part of our tire recycling operation that makes us superior to our competitors is the fact that we have multiple products and multiple markets. We have learned that having only one or two markets can stop your recycling program in its tracks and we have worked hard at developing many markets to ensure that we will be able to recycle our tires. In the last few years we have sold rubber from tires for tire derived fuel, tire chips used in construction of landfill liners, tire chips used in the construction of septic tank lines, loose colored mulch, solid colored mulch, loose playground rubber. We are aggressively working to open up new markets and have in the past few days sold our first poured in place playground cover to the city of Altos, Arkansas which will be installed in a few weeks.

One aspect about our operations methods and approaches is the fact that we are located inside the IDWTMP area and we create many jobs in this area. The further you refine the rubber that you generate when you shred a tire the more jobs you create. We have a crew of employees that unload tires onto conveyors and keep the tire shredder running. After that we have a crew of employees that runs a rubber grinding operation creating more jobs. By spring we will have another crew coloring and bagging rubber mulch. While this is being done we have another crew installing solid mulch that we already have orders for. One job builds on another and before you know it you have created a large number of jobs where only a few existed before. All of these employees are paying taxes in this area and by doing this are giving a return to the District for the money you are paying us for taking your tires.

www.davisrubbercompany.com

1600 East 15th Street • Little Rock, Arkansas 72202
(501) 374-2166 • FAX (501) 374-7523

a. The Davis Rubber Company has been providing management and supervisory services to the Inter-District now for close to 10 years. Our office staff and supervisor staff includes Martha Autry, Office Manager, who has been with us for over 30 years. Matt Howard, Waste tire coordinator who has worked with our company for over 16 years. Roger and Phillip Davis are the owner managers of the operation and both have individual experience in the tire recycling business of over 40 years.

b. Roger and Phillip are the bosses. Then Martha and Matt share manager responsibilities. Erron Hayes is manager of the tire shredding machines.

c. The Davis Rubber Company is located on approximately a 3 acre lot located in the Little Rock industrial area at 1600 East 15th Street. On this property there are two buildings. One houses the shredding operation and the other contains the rubber coloring operation. The equipment that is located on site of this writing is listed below.

- 1- SSI 200 horse power model 3400 shredder. Used to process whole tires into 3 inch pieces
- 2- disc screens. Used to size the shreds coming out of shredders.
- 16- conveyors. Used to transport material from one operation to another.
- 7- magnetic. Used to remove steel from shredded or ground tire rubber.
- 1- Eidal 75 horse power model 4532 shredder. Used to reduce 3 inch tire shreds into 1 and ½ inch pieces.
- 1- Cumberland 200 horse power model 37B granulator. Used to reduce 1 ½ inch pieces of tire shreds into smaller pieces.
- 1- Sterling Elutration System. Used to remove fiber and dust from ground rubber from tires.
- 1- Fiat Allias articulating loader. Used to load trucks and move materials around on our yard.
- 1- Dresser Track Loader. Used to load trucks and move materials around on our yard.
- 1- Eagle Multi Slicer Truck tire Debeader. Used to debead truck tires.
- 1- Mixer. Used to mix rubber particles with a binder or coloring agent.
- 2- Fork lifts. Used to transport and load bags of ground rubber.

d. The Davis Rubber Company will be providing the waste tire collection centers for Pulaski county. There are three locations. They are as follows.

Davis Rubber Company, 1600 East 15th Street, Little Rock
Inter State Tire, North Little Rock
Natural State Tire, Jacksonville

EMS is a multimillion-dollar company with sufficient reserves to perform the services described in this proposal. There are no outstanding financial or legal claims or settlements involving the company.

- e. The Davis Rubber Company owns 19 trailers for transporting waste tires. We are presently using two trucking companies to move our trailers. Howards of North Little Rock and D and G trucking of Cabot. We also have made a transportation agreement with EMS and will be using there services to move some of the tires.
 - f. Our Waste Tire Processing Facility is located in Little Rock Arkansas and the processing equipment located there was listed in section c..
 - g. Our end use markets as of today consist of Tire Derived Fuel used by International Paper and tire chips used in landfill construction by EMS. We are presently selling hundreds of tons of recycled tire rubber per year to other markets. We are working steadily to expand and secure more of these types of markets. Our approach to expanding markets consist of going to many trade shows per year and advertising with newspapers and TV stations.
 - h. With the new equipment that we direct the Inter-District to purchase along with the equipment that we add to this machine, we anticipate a true recycle product rate to run close to 90 to 95% of every tire. What can not be recycled will be a small amount of loose tire wire that will be disposed of in a landfill.
 - i. The Davis Rubber Company is going to direct the Inter-District to purchase a specific piece of equipment. We will keep running our operation as it is today until this new machine arrives. When it arrives, we anticipate a two week period of down time to install and get up and running all of the new equipment.
3. The Davis Rubber Company will recycle up to 95% of the waste tires that come into our operation. The tires will be shredded into clean cut pieces and the vast majority of this material can be consumed as either tire derived fuel, tire chips used in construction or feed stock for our tire grinding operation. The portion of the tire material that can not be recycled will be the loose wire fragments that are pulled out of the tires during shredding and some of the smallest tire chips that are full of wire. Our goal is to have this volume of material that can not be recycled to be only 5% or less of the total volume of tire material that comes into plant.
4. As mentioned before the Davis Rubber Company and EMS are joining forces to provide services to the Inter-District program. The Davis Rubber Company will be providing service specifically to Pulaski County.
5. The Davis Rubber Company is a permitted waste tire processor in the state of Arkansas. Our permit number is 002-WTP-R1 and a copy of this permit is included. The Davis Rubber Company also has licensed operators at its facilities and there license certificates are included.

6. Our financial assurance is in the form of an Irrevocable Standby Letter Of Credit. This letter of credit number 92-s-1609 automatically renews at the end of each year and is now with Bank of America. While preparing for this bid I had a discussion with Susan Speaks at the Arkansas Department of Environmental Control and she said that this letter of credit would be good until 2005 at which time our waste tire processing facility permit will need to be renewed and our financial assurance will be reviewed at that time.

7. Experience and Qualifications. The Davis Rubber Company is the oldest tire recycling operation in the world. Since our company was founded in 1924 by Herschel Davis we have recycled at least 30,000,000 of this states tires. Some of the products that have been produced over the years include tire patches and tire liners, horse bridles, fishing lures, cotton picker knee pads, shoes, belts, stamped out rubber products, #1 tread peels, tire derived fuel, tire chips used in construction, rubber mulch, and playground rubber of all colors and types. We have supplied whole tires to two different cement plants Over the years and have an understanding of this type of operation.

Being in business for 78 years and doing business with other companies all across the country for that length of time has given us and invaluable number of contacts that can help us and the district recycle tires. For example, Mike Sorcher from M.A. and Associates is an individual who wants to purchase 50 to 150 tons of tire derived fuel from us each day. I learned of Mr. Sorcher about nine years ago while talking to Eugene Beck of Beck's Tires in K. C. Missouri. Mr. Beck is an old friend of ours and has also been in the used and waste tire business for a long time. He and our father were doing business together back to 1960. If it had not been for our previous business dealings with Mr. Beck I would not have learned of Mr. Sorcher. These kinds of business contacts are hard to put a value on and only come from being around for 78 years.

8. The Davis Rubber Company and EMS are joining forces to serve this Inter-District contract. Davis Rubber Company will provide service to all of Pulaski county and EMS will provide service to the rest of the Inter-District.

9. The Davis Rubber Company has at this time markets that will consume recycled tires in amounts that are far in excess of the amount of tires generated by the IDWTP annually. One is MA and Associates and there markets for tire derived fuel. A letter is enclosed and it show where they are asking the Davis Rubber Company to produce from 50 to 150 tons a day. All of the tires of the IDWTP combined would not amount to 50 tons a day. , The Davis Rubber Company and M.A. Associates have a long working relationship that goes back many years. We have produced high quality tire derived fuel in the past for M. A. and they know they can depend on us to maintain that level of quality.

Another market that is open to the Davis Rubber Company for the recycled products produced from its tire processing operation is for the use of tire chips used in the construction of landfill lechate liners by EMS. EMS manages several land fills in the state and can consume an equivalent of all of the material generated by shredding 500,000 tires per year. This material can contain the wire from tires as long as the wire is not sticking out from the edge of the tire chip too long. With the new equipment that the IDWTP is

going to purchase, 90-95% of the wire in the tires will be recycled by using these chips in landfill construction.

The Davis Rubber Company has other markets that it is presently selling recycled rubber generated from its tire recycling operation and it is working to develop new markets. The existing markets consist of loose and molded playground covers. Most of this at this writing is being purchased by cities and schools as part of the grant program sponsored by the IDWTP but we are seeing an ever growing market for this product from persons not involved in the grant program. Colored Rubber Mulch is a fairly new product which is having great success in other parts of the country. We have been working steadily for approximately 2 years to develop this product ourselves and install manufacturing equipment and methods to mass produce this product. We are at a stage with this where we are just beginning to market this product over the mass media. We have run adds with Comcast over the last 3 weeks and have been very pleased with the results. We are looking forward to continuing our efforts to develop this new and interesting market. The Davis Rubber Company has made several contacts in the past few years with companies that are interested in purchasing large amounts of ground rubber from our company. As time goes by we intend to work with these individuals and begin selling large amounts of ground rubber (crumb) to these markets.

10. Cost. Our cost sheet is enclosed in this bid package in the manner spelled out in your request for proposals.

11. Grant. The Davis Rubber Company is pleased to see that the IDWTP is offering this grant to help promote the recycling of tires. If we are selected as the winning bidder Davis Rubber Company will direct the IDWTP to use its \$300,000 to purchase a piece of equipment that will increase dramatically the amount of tire material that is being recycled. The following is the qualifications of the kind of equipment that we wish see the IDWTP purchase.

A tire shredder that is a single machine with counter rotating cutter shafts capable of processing whole passenger and over-the-road truck tires up to and including 1100 x 24.5. This shredder must be capable of producing 2-inch nominal clean cut chips at the rate of 1000 passenger tire equivalents per hour. The shredder must be capable of processing 200,000 passenger tires into, a minimum of 95% clean cut, 2-inch nominal chips with no more than 1/2 inch wire protrusion in any one direction. This shredder must have knives that bolt on and are resharpenable and replaceable and are made from high-grade tool steel alloy and through hardened to 60-62RC. The clearance between the blades when new must be between 0-2 thousandths of an inch and between .015 to .020 thousandths of an inch when worn. This tire shredder must be new and come with a full one year warranty. The manufacturer of this shredder will supply on site operator and maintenance training for this machine. Operation and maintenance manuals as well as part explosion manuals will also be provided.

The Davis Rubber Company will spend approximately \$40,000 to transport this machine to our facility, unload it and do all electrical work needed to get this machine up and running. We also will be purchasing a new screen to work in conjunction with this shredder and it will cost approximately \$40,000. New conveyors will be needed to make

all of this equipment work together and they will cost approximately \$20,000. Before the first year of this 2003 contract is over the Davis Rubber Company will purchase a new loader to load trucks and move material around on our property and it will cost approximately \$70,000. This comes to a total new investment of \$170,000 and this is on top of the \$80,000 that we already owe on a bank note that we used to purchase a rubber grinding operation around two years ago. If we are the winning bidder, our total commitment to recycling tires will be \$250,000.

12. All business expenses and cost of doing business under this contract for the area of Pulaski County will be paid for by the Davis Rubber Company.

13 The Davis Rubber Company is aware of the fact that this contract will run for three years with an option to renew the agreement for an additional two years.

14 The Davis Rubber Company is aware of the fact that the Districts' performance under a contract awarded for the IDWTP will be contingent upon all applicable local, state, and federal laws and regulations; and, receipt of Waste Tire Grant funds from the State of Arkansas in amounts sufficient to finance the program.

15 Corporate Information is included regarding ownership of the Davis Rubber Company. Our company has supplied the financial capacity to operate the Districts waste tire program for the past 9 ½ years through some ruff times and our financial situation is strong today. The Davis Rubber Company has no outstanding legal claims or settlements against it. Our only debt is to Nations Bank for a loan we took out to purchase the equipment to grind the rubber we generate from tires.

The officers of the Davis Rubber Company Inc. are as follows

Phillip Davis	President
Roger Davis	Vice President
Steve Davis	Secretary
Barbara Davis	Treasurer

Ownership of the Davis Rubber Company.

Barbara Davis	51.0%
Cole Davis	9.8%
Dan Davis	9.8%
Phillip Davis	14.7%
Roger Davis	14.7%

16 We have read and understand your evaluation and selection process for this contract.

17 If selected as the winner of this contract the Davis Rubber Company will supply the IDWTP with a draft contract for consideration within ten working days of notification of selection.

18. We understand that all materials submitted in this response will be open to public inspection.

19. Additional Information. I hope that I have explained our companies operation well enough by this point that I don't need to give any additional information.



PERMIT
FOR THE CONSTRUCTION AND/OR OPERATION OF A
WASTE TIRE PROCESSING FACILITY
ISSUED BY
STATE OF ARKANSAS
DEPARTMENT OF ENVIRONMENTAL QUALITY

PERMIT CLASS: Waste Tire Processing Facility

CSN IDENTIFICATION : 60-1145
PERMIT NUMBER: 002-WTP-R1

EFFECTIVE DATE: December 30, 1999

EXPIRATION DATE: February 28, 2005

PERMIT OWNER AND ADDRESS: Davis Rubber Company
1600 East 15th Street
Little Rock, AR 72203

LOCATION: 1600 East 15th Street, Little Rock, Pulaski County, Arkansas

DESCRIPTION OF THIS PERMIT ACTION:

Permit Condition No. 10 is revised to allow receipt and processing of waste tires or used tires from outside of the Pulaski County Regional Solid Waste Management District at the processing facility. Permit Condition No 17 is revised to allow transport of whole tires from the processing facility to other markets.

PERMIT CONDITIONS:

This permit is your authority to construct and/or operate the Waste Tire Processing Facility set forth in your original application dated June 8, 1992 and modifications dated July 8, 1994 and June 30, 1999. This permit is issued pursuant to the provisions of the Arkansas Recycling Act (Act 749 of 1991; Subchapter 4 et seq., Ark. Stats.), hereinafter called the "Act". The Regulations and Administrative Procedures of the Waste Tire Program, hereinafter called "Regulation 14", and all other applicable rules and regulation and any additional related acts of the Department of Environmental Quality, hereinafter called the "Department", and the following terms and conditions:

1. The processing facility shall be constructed, maintained, and operated in accordance with the final plans and specifications as approved by the Department and in compliance with applicable provisions of the Act, Regulation 14, and all other applicable rules and regulations.
2. This permit shall automatically terminate unless construction and/or operation of the processing facility has been commenced within 180 days from the date hereof and completed with all reasonable diligence. The Department shall be notified in writing when the processing facility has been completed in order that it may be inspected. Operations shall not commence until the facility has received a satisfactory pre-operation inspection in writing.

SEE ATTACHED PAGES FOR ADDITIONAL PERMIT CONDITIONS

3. The initial amount of financial assurance required is one hundred thousand dollars, (\$100,000). This amount may be increased at the discretion of the Chief of the Solid Waste Management Division, should the facility and any off-site storage facilities exceed a maximum limit of 200,000 waste tires. The instruments used must be in the exact form set forth in Regulation 14 and must be filed with the Department before the permit can become effective.

This financial assurance amount must be maintained at the initial amount at all times in order to cover the provisions of Act 531 of 1989 and Regulation 14, unless other arrangements are met to cover these provisions. Any other arrangements must be approved in writing by the Department. No operations are to take place until financial arrangements are approved by the Department.

4. This permit shall be framed and posted near the public's entrance to the facility.

5. This permit may be revoked or modified whenever, in the opinion of the Department, the facilities are no longer in compliance with the Act, Regulation 14, and applicable rules and regulations. This permit shall not relieve the permittee, its agents or employees, from compliance with all provisions of the Act and Regulation 14. Failure to submit the Processing Facility Annual Report and failure to pay annual permit fees when due may result in revocation of this permit.

6. Any change in ownership or control of the operation of this facility will be considered a modification of the permit. Failure to notify the Department of a change in ownership or a change of operators will be cause for revocation of this permit. Change in ownership or control is determined by a change of five percent (5%) or more.

7. This permit is issued in reliance upon the statements and representations made in the application and the plans and specifications and the Department has no responsibility for the adequacy or proper functioning of the processing facility. Nothing herein contained shall be construed as releasing the permittee from any liability for damage to persons or property by reason of the installation, maintenance, or operation of the processing facility. The processing facility shall be operated by qualified personnel, pursuant to Regulation 27, and maintained in good operating condition at all times.

8. Failure of the permittee to comply with the waste tire processing facility requirements as listed in Section 14 and storage requirements as listed in Section 16 of Regulation 14 may result in the revocation of the permit.

9. The inflow of waste tires from all sources and the processing operations of waste tires shall immediately cease in the event this facility exceeds the calculated waste tire storage limit or violates waste tire storage requirements. The facility must have a contingency plan allowing the shipment of excess waste tires to another permitted facility, with Department approval. Operations may not resume without authorization by the Department.


10. The facility is authorized to receive or process waste tires or used tires from inside and outside of the Pulaski County Regional Solid Waste Management District, provided the facility does not exceed the calculated waste tire storage limits nor violate waste tire storage requirements.

11. The processing facility shall not in any way be associated with an off-site storage area if the processing facility fails in any one year to process their required accumulation. Failure to properly store processed material on-site or off-site shall be cause to void the processing permit.

12. A storage pad shall be provided which protects the groundwater and surface water from contamination. A stormwater permit may be required from ADEQ Water Division.

13. A vector control program approved by the ADEQ must be functional at all times.
14. The permittee shall provide a contingency plan that addresses groundwater and surface water in case of fire.
15. Any loss or reduction (greater than 25 percent of the previous yearly average) in market outlets for processed rubber produced at this plant must be reported to the Department within ten days of permittee's knowledge of such.
16. The existing scrap rubber pile at 1600 East 15th, Little Rock, Arkansas, shall be removed and area cleaned no later than June 1, 1995. The whole waste tires located around the perimeter of the site will be processed no later than January 1, 1995.
17. No waste tires or used tires taken into this site, nor booked by contract or agreement for processing at this site, may be redistributed, given, and/or sold to other parties if the tires have not been first processed, except under the following conditions:
 - a. Regional Solid Waste Management Districts contracting with Davis Rubber Company shall be notified in writing;
 - b. ADEQ has no liability or responsibility for damage to persons or property by reason of the resale of waste tires or used tires from this facility;
 - c. Waste tires may only be transported to facilities that are properly permitted by the Department of Environmental Quality, or the appropriate environmental/pollution control agency(ies) if transported out of state;
 - d. Monthly reports shall be submitted to ADEQ detailing the amount of waste tires and used tires sold and the receiving parties of the waste tires and used tires.
18. This permit will be continued in effect until February 28, 2005, except as noted in Permit Condition No. 5. hereinbefore.
19. The Department, its employees, agents, or any authorized person shall have the right to enter the property at any time for any reason for the proposed including but not limited to taking of samples, inspection, and any other enforcement or engineering action, without interference or delay from the permittee.
20. This facility shall notify the Department in writing of any breakdowns within seven days of the breakdown. This facility shall provide the Department with copies of correspondence that affect the waste tire operations at this facility.
21. The Department's decision to issue this permit is final for purposes of appeal as of the date indicated in the Certificate of Service below.

APPROVED BY: Department of Environmental Quality
8017 I-30, Post Office Box 8913
Little Rock, Arkansas 72219-8913



For the Director

12-30-99

Date

CERTIFICATE OF SERVICE

I, Christy Heider, hereby certify that a copy of this permit has been mailed
by first class mail to: Mr. Roger Davis, Davis Rubber Company, 1600 East 15th Street, Little Rock,
AR 72202, on or before this 30 day of December, 1999.



State of Arkansas
Department of
Environmental Quality



Solid Waste Management Facility Operator License

01118 Matthew D. Howard
pursuant to A.C.A. § 58-6-906, as amended.

20030630

[Signature]
Chief, Solid Waste Management Division

06/30/2003



State of Arkansas
Department of
Environmental Quality



Be it known that

01118 Matthew D. Howard

is hereby licensed as a

Solid Waste Management Facility Operator

having qualified as required by law in accordance with Regulations adopted by the Commission pursuant to A.C.A. 58-6-906, as amended, relative to operating personnel of solid waste management facilities.

Classification(s): 3B

EXPIRES: 30 June 2003

[Signature]
Chief, Solid Waste Management Division

NOV-05-02 10:32AM FROD-ADP-512
5015820811
T-405 P. 002/004 F-005



M.A. ASSOCIATES, INC.
a resource recovery company

October 9, 2002

Mr. Roger Davis
Davis Tire Company
1600 East 15th Street
Little Rock, AR 72202

Dear Roger,

It was good to hear from you the other day. As we discussed on the phone, M.A. Associates is still interested to purchase any tire derived fuel (TDF) that you might produce at your plant. The TDF markets continue to increase and this helps to stabilize pricing. At the present time, we need an additional 2 to 6 loads per day of TDF in your region. This is equivalent to approximately 50 to 150 tons per day.

—Throughout the year, companies that want us to purchase and market their TDF contact us. In most cases, we are not willing to conduct business with many of these companies due to quality concerns. This is not the case with Davis Tire Company. You have the experience that is necessary in this industry to be able to operate a cost effective plant and produce a high quality product.

On a personal note, the Waste Tire District would be crazy to look at replacing Davis Tire as the tire collector and processor in the region. You have the *experience* and customer contacts that are necessary to service the tire dealers in your region. I don't believe they know how easy your company makes it for them. Hopefully you are successful to retain this business.

Sincerely,

Michael Sorcher
President
M.A. Associates, Inc.



Eaton-Moery Environmental Services, Inc.

**206 E. Merriman
Wynne, Arkansas 72396**

To Whom It May Concern:

This is to notify the Inter District Waste Tire Program that if Davis Rubber/EMS win the contract for the 2003 IDWTP that Eaton Moery Environmental, Inc. will purchase tire chips from Davis Rubber Company

EMS, Inc. will purchase from Davis Rubber Company approximately 5,000 tons of tire chips annually. These chips will be used in the engineered construction of landfill cells to help control leachate. We operate 3 landfills and have a large requirement for these leachate tire chips.

Sincerely

A handwritten signature in black ink, appearing to read "Byron Neal", is written over a faint, illegible typed name.

Byron Neal
Sales Representative
Eaton Moery Environmental Services, Inc.

Landfill Office: (870) 755-5331
Administration Office: (870) 238-3260

**Request for Proposals
Waste Tire Management Services
Inter-District Waste Tire Management Program**

Central Arkansas Regional Solid Waste Management District
Pulaski County Regional Solid Waste Management District
Saline County Regional Solid Waste Management District
Southwest Central Regional Solid Waste Management District

INTER-DISTRICT WASTE TIRE MANAGEMENT PROGRAM

BID SHEET

Regulation 14, Section 12 requires Waste Tire Collection Centers not to charge a fee to Individual residents for discarding four or fewer automobile tires, nor to charge a fee to retail sellers of tires with a waste tire number for discarding tires equal to the number of tires for which the retailer has collected the waste fees levied by Arkansas Code 8-9-404.

Regulation 14, Section 12, requires Waste Tire Collection Centers to collect a fee of \$1.00 per tire for all other automobile tires discarded. In addition, Section 12 provides that the Waste Tire Collection Center shall collect an equitable fee on all truck and specialty tires. All such fees collected by the Waste Tire Collection Centers shall be remitted to the District.

Bids shall be quoted as a Per Tire Unit Price and shall include the total cost per tire for waste tire collection, loading, transportation, processing, and shipment to the end market. The Per Tire Unit prices shall cover all business and operational costs associated with the company providing Waste Tire Management Services to the nine county Inter-District Service Area. The District will not be responsible for paying any business or operational expenses associated with doing business related to this contract.

Per Tire Unit Prices shall be quoted for the following types of waste tires.

Type of Waste Tires	Per Tire Unit Price
Automobile Tires (tires with rim size less than 19.5 inches)	\$ 1.00
Truck Tires (tires with rim size larger than 19.5 inches)	\$ 4.00 At our door \$ 4.50 At Collection Centers
Specialty Tires (super singles, farm tractor tires, road grader tires, etc.) list separately by weigh or size	\$ Next Page

Specialty Tires

This is a list of prices for what we consider to be specialty tires. It would be impossible for us to make a single price on all tires grouped under your category of specialty tires. Farm tractor tires range in size from smaller than passenger car tires up to tires that weigh several hundred pounds. A scraper tire can range anywhere from 200 pounds up to 35,000 lbs.

Passenger tire on wheel \$ 3.50
Truck tire on wheel \$25.00

Super Single Truck: \$ 9.00

Farm Tractor Tires:

11.2 X 24 through 11.2 X 38
10 X 24 through 10 X 38
12.4 X 24 through 12.4 X 38
11 X 24 through 11 X 38 \$ 10.50

13.6 X 24 through 13.6 X 38
12 X 24 through 12 X 38
14.9 X 24 through 14.9 X 38
13 X 24 through 13 X 38 \$ 25.00

16.9 X 24 through 16.9 X 38
14 X 24 through 14 X 38
18.4 X 24 through 18.4 X 38
15 X 24 through 15 X 38
15.5 X 24 through 15.5 X 38 \$ 35.00

20.8 X 24 through 20.8 X 38 \$ 57.00

Road Grader Tires

1200 X 24
1300 X 24
1400 X 24 \$ 25.00

Skidder Tires

All 23.1 \$ 80.00

All farm tires on the wheel will be charged triple the cost of the tire size.

Larger earth mover tires up to 1000 lbs. \$150 to \$200 each. Over 1000 lbs. will need individual quote.

Resolution No. 3 of 2002

A Resolution of the Saline County Regional Solid Waste Management District (District) Authorizing the Board Chairman to negotiate and enter into a final contract with Davis Rubber Company and Eaton Morey Environmental Services for the operation of Inter-District Waste Tire Program.

Whereas, The District receives Waste Tire Management Program grant funds from the State of Arkansas and other fees and interest; and,

Whereas, The District participate in a Waste Tire Management Program with three other Central Arkansas Regional Solid Waste Management Districts; and,

Whereas, The waste tire management contract for the Inter-District Waste Tire Program expires February 28, 2003; and,

Whereas, The Inter-District Waste Program has solicited proposals from qualified companies to operate the waste tire program; and,

Whereas, One proposal was received and review by the staff and the staff recommends that the four regional solid waste management districts comprising the Inter-District Waste Tire Management Program approve a new contract with Davis Rubber and Eaton Morey Environmental Services; and,

Whereas, The Inter-District Program Oversight Board will review the waste tire proposal and act on it January 8, 2003.

Now therefore be it resolved by Saline County RSWMD board of Directors that:


Section 1: The proposal submitted by Davis Rubber Company and Eaton Morey Environmental Services is the best proposal in terms of price and qualifications.

Section 2: The District Chairman is here by authorized to negotiate and enter into a new contract with Davis Rubber Company and Eaton Morey Environmental Services for operation of the Inter-District Waste Tire Management Program.

Section 3: Execution of said contract will be contingent upon approval and recommendation of the Inter-District Oversight Board.

Adopted: 11/20/2002

Attest:


Secretary/Treasurer

Approved:


Billy Bob Curtis, III, Chairman

Resolution No. 2 of 2002

A Resolution of the Southwest Central Regional Solid Waste Management District (District) Authorizing the Board Chairman to negotiate and enter into a final contract with Davis Rubber Company and Eaton Morey Environmental Services for the operation of Inter-District Waste Tire Program.

- Whereas, The District receives Waste Tire Management Program grant funds from the State of Arkansas and other fees and interest; and,
- Whereas, The District participate in a Waste Tire Management Program with three other Central Arkansas Regional Solid Waste Management Districts; and,
- Whereas, The waste tire management contract for the Inter-District Waste Tire Program expires February 28, 2003; and,
- Whereas, The Inter-District Waste Program has solicited proposals from qualified companies to operate the waste tire program; and,
- Whereas, One proposal was received and review by the staff and the staff recommends that the four regional solid waste management districts comprising the Inter-District Waste Tire Management Program approve a new contract with Davis Rubber and Eaton Morey Environmental Services; and,
- Whereas, The Inter-District Program Oversight Board will review the waste tire proposal and act on it January 8, 2003.

Now therefore be it resolved by Southwest Central RSWMD board of Directors that:

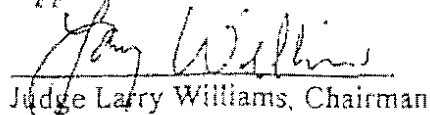
- Section 1: The proposal submitted by Davis Rubber Company and Eaton Morey Environmental Services is the best proposal in terms of price and qualifications.
- Section 2: The District Chairman is hereby authorized to negotiate and enter into a new contract with Davis Rubber Company and Eaton Morey Environmental Services for operation of the Inter-District Waste Tire Management Program.
- Section 3: Execution of said contract will be contingent upon approval and recommendation of the Inter-District Oversight Board.

Adopted: 11/20/02

Attest:


Secretary/Treasurer

Approved:


Judge Larry Williams, Chairman

Resolution No. 16

A Resolution of the Central Arkansas Regional Solid Waste Management District (District) Authorizing the Board Chairman to negotiate and enter into a final contract with Davis Rubber Company and Eaton Morey Environmental Services for the operation of Inter-District Waste Tire Program.

- Whereas, The District receives Waste Tire Management Program grant funds from the State of Arkansas and other fees and interest; and,
- Whereas, The District participate in a Waste Tire Management Program with three other Central Arkansas Regional Solid Waste Management Districts; and,
- Whereas, The waste tire management contract for the Inter-District Waste Tire Program expires February 28, 2003; and,
- Whereas, The Inter-District Waste Program has solicited proposals from qualified companies to operate the waste tire program; and,
- Whereas, One proposal was received and review by the staff and the staff recommends that the four regional solid waste management districts comprising the Inter-District Waste Tire Management Program approve a new contract with Davis Rubber and Eaton Morey Environmental Services; and,
- Whereas, The Inter-District Program Oversight Board will review the waste tire proposal and act on it January 8, 2003.

Now therefore be it resolved by Central Arkansas RSWMD board of Directors that:

- Section 1: The proposal submitted by Davis Rubber Company and Eaton Morey Environmental Services is the best proposal in terms of price and qualifications.
- Section 2: The District Chairman is here by authorized to negotiate and enter into a new contract with Davis Rubber Company and Eaton Morey Environmental Services for operation of the Inter-District Waste Tire Management Program.
- Section 3: Execution of said contract will be contingent upon approval and recommendation of the Inter-District Oversight Board.

Adopted: 12-5-02

Attest:


Secretary/Treasurer

Approved:


Judge Tom Catlett, Chairman

A Resolution of the Pulaski County Regional Solid Waste Management District (District) Authorizing the Board Chairman to negotiate and enter into a final contract with Davis Rubber Company and Eaton Morey Environmental Services for the operation of Inter-District Waste Tire Program.

Whereas, The District receives Waste Tire Management Program grant funds from the State of Arkansas and other fees and interest; and,

Whereas, The District participate in a Waste Tire Management Program with three other Central Arkansas Regional Solid Waste Management Districts; and,

Whereas, The waste tire management contract for the Inter-District Waste Tire Program expires February 28, 2003; and,

Whereas, The Inter-District Waste Program has solicited proposals from qualified companies to operate the waste tire program; and,

Whereas, One proposal was received and review by the staff and the staff recommends that the four regional solid waste management districts comprising the Inter-District Waste Tire Management Program approve a new contract with Davis Rubber and Eaton Morey Environmental Services; and,

Whereas, The Inter-District Program Oversight Board will review the waste tire proposal and act on it January 8, 2003.


Now therefore be it resolved by Pulaski County RSWMD board of Directors that:

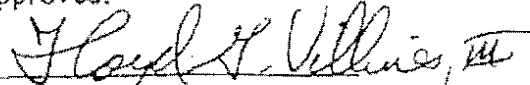
Section 1: The proposal submitted by Davis Rubber Company and Eaton Morey Environmental Services is the best proposal in terms of price and qualifications.

Section 2: The District Chairman is here by authorized to negotiate and enter into a new contract with Davis Rubber Company and Eaton Morey Environmental Services for operation of the Inter-District Waste Tire Management Program.

Section 3: Execution of said contract will be contingent upon approval and recommendation of the Inter-District Oversight Board.

Adopted: 12/12/02

Attest:

Secretary/Treasurer

Approved:

Judge F. G. 'Buddy' Villines, III, Chairman

FILED
02 DEC 16 PM 2:31
CAROLYN STALEY
CLERK
CIRCUIT-COUNTY